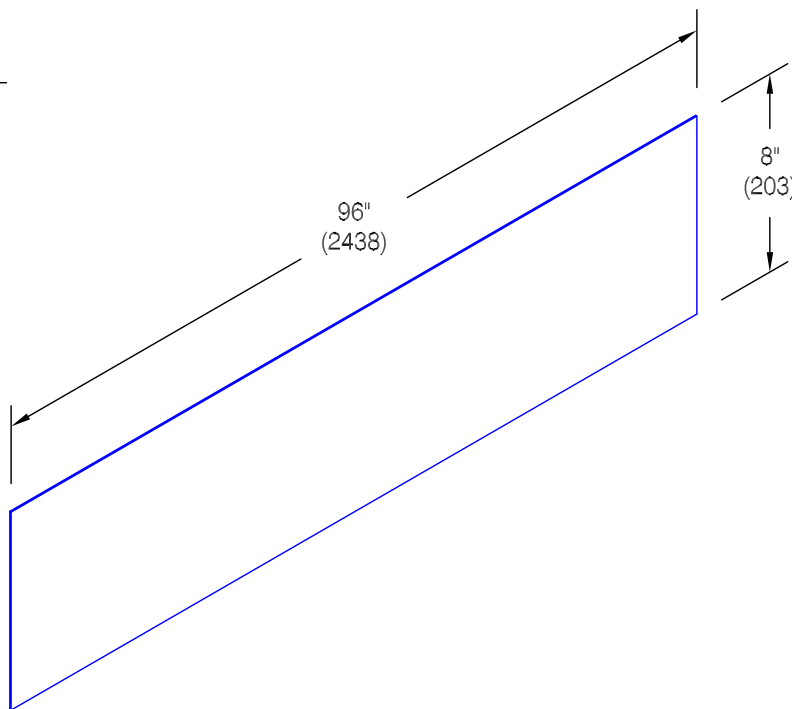
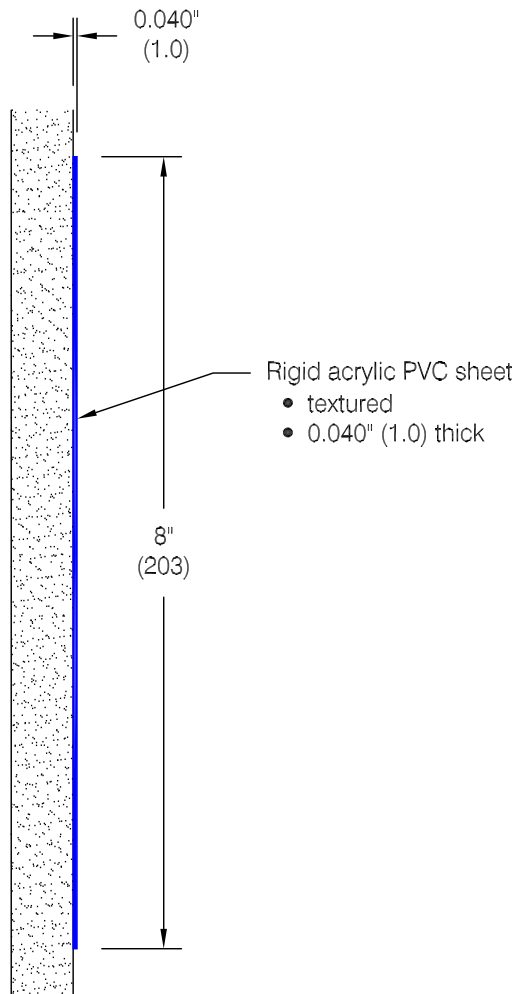


## CR-48 Rub Rail



### Features:

- Class A fire rating
- Heavier gauges available
- Stock length 8'-0" (2438)

### Finishes:

- Manufacturer's Standard colors
- Custom colors available

### Mounting Options:

- Adhesive  
 ADH-30 Contact adhesive or  
 ADH-60 Mastic adhesive supplied  
 separately as required
- Drilled  
 Clearance holes for  
 ABSS-80 #8 x 1 1/4" (32) pan head  
 sheet metal screw supplied  
 separately as required
- Taped  
 ADH-4042 double sided adhesive  
 tape factory applied to rub rail

Customer :

Project :

Architect :

Sales Rep :

WD.41.0a